

High-Current Systems Production Center at Hanau-Grossauheim

Capable - Dependable - Worldwide



ABB Calor Emag Schaltanlagen AG



The products:

High-current systems and metal fabrication

The production technologies employed by ACE/HS, backed by fifty years experience and a quality management system to EN ISO 9001, guarantee adherence to the customer's precise requirements, and skilled workmanship at every stage of manufacture.

Modern facilities, including welding machines, highly trained staff and welders qualified to DIN/EN 287.T1 and T2, provide a solid foundation for welding pure aluminium, aluminium alloys and steel by the MIG/MAG and TIG methods.

Special-purpose machines for making individual parts and components include a CNC-controlled four-roll tube bending machine, longitudinal-seam and round-seam welding machines, and a CNC-controlled plasma cutting machine.



Production shop for busducts, showing machines, welding bays

High-current busducts

Development and manufacture of the busducts take place in a self-contained department. The process begins with the scheduling of materials and ends with the completion of assemblies ready for shipment. High dimensional accuracy and quality ensure smooth on-site installation and trouble-free service.

Some 1000 high-current busducts have been delivered to date, for currents ranging from 2.0 to 41.0 kA.



CNC-roll bending machine

Generator breaker modules

Fully fitted out in the factory with generator circuit-breaker, current transformer, voltage transformer, start-up disconnecter, line disconnecter, earthing switch, surge protection equipment and control cubicle.

Longitudinal-seam welding machine



CNC plasma cutting machine for round cuts and cut-outs in the enclosure



Metal fabrication Components

Here ancillary parts are made for the high- current busducts. Assignments for other products are also accepted.

We make:

- Aluminium-section transformer tanks for electric locomotives
- Forced-air cooling equipment in aluminium for power plants
- Terminal housings in aluminium for generators and power transformers
- Cubicles for voltage transformers and surge protection equipment
- Manual, mechanized and fully automatic welding of aluminium and steel
- Steel and aluminium components by stamping, bending and rolling
- Aluminium expansion straps
- Galvanic silver-plating of copper and aluminium parts



Round-seam welding machine



Ring-seam and longitudinal-seam welding machine for welded parts, welding flanges, etc.

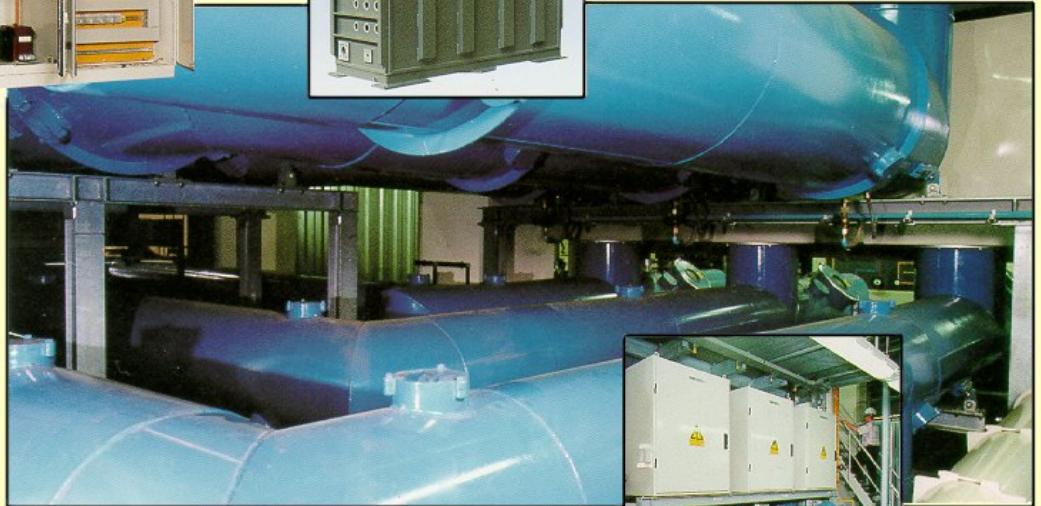
Components manufactured in the production center at Hanau-Grossauheim



Voltage transformer and capacitor cubicle



Aluminium transformer housing for a Euro Shuttle locomotive



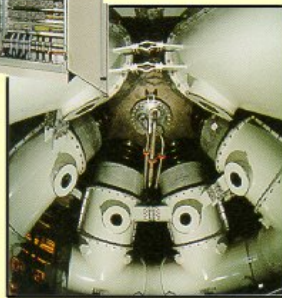
High-current busduct, line with main busbar above, branch bus to plant services transformer below



Voltage-transformer and capacitor cubicle



Voltage-transformer cubicle with capacitors, earthing switch and start-up disconnecter



Single-phase generator terminal connections with enclosure shorting link



Draw out voltage transformer with primary fuse



ABB Calor Emag Schaltanlagen AG

Kaefertaler Strasse 250
D-68167 Mannheim, Germany
Phone: +49(0)621/386-2777
Fax: +49(0)621/386-2193
E-Mail: ace.produktinfo@deace.mail.abb.com
Internet: <http://www.abb-calor-emag.de>

ABB Calor Emag Schaltanlagen AG

Werk Hanau-Großauheim
Brown-Boveri-Strasse 30
63457 Hanau-Großauheim, Germany
Phone: +49(0)6181/509-922
Fax: +49(0)6181/509-888
Telex: 4 184 177 ab d